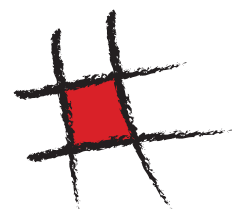
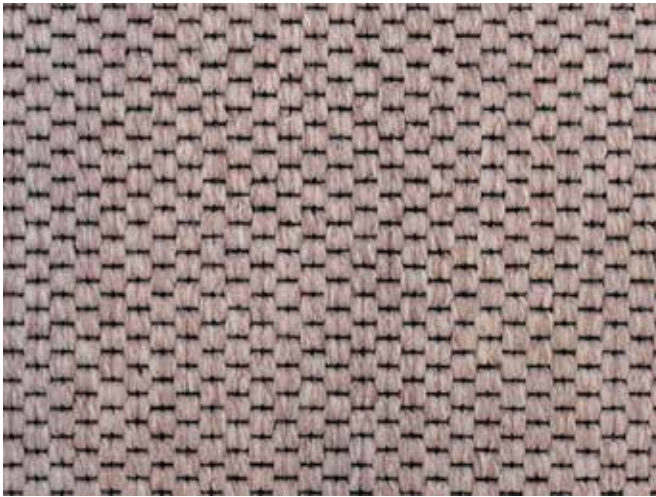


# Lima

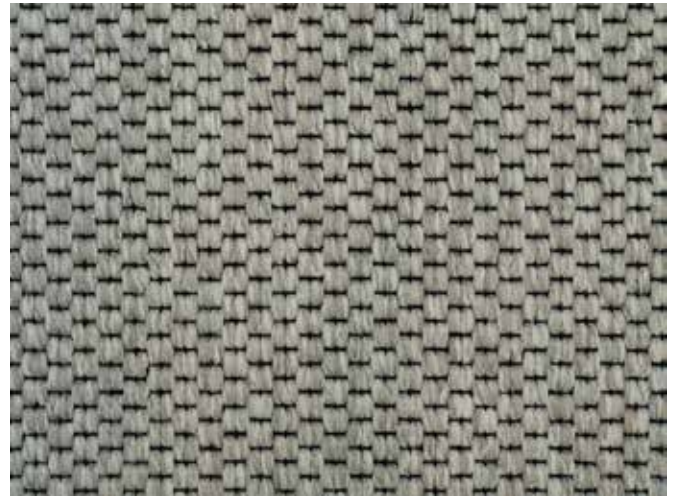
MADE IN NETHERLANDS







Pink 3452



Platina 3421



Blue 3432



Anthracite 3427



Grey Beige 3416



Silver 3423





Mint 3442



Berber 3411



Light Beige 3412



Sand 3413



Dark Beige 3415



Sisal 3486



# Lima

MADE IN NETHERLANDS

## SPECIFICATION

Manufacturing process	: Flatweave
Pile material warp	: 100% Jute
Pile material weft	: 100% PP
Secondary backing	: Felt ca. 8 mm.
Pile weight	: 410 gr/m <sup>2</sup>
Total weight	: Felt ca. 1435 gr./m <sup>2</sup> +/- 7.5%
Pile height	: ca. 2 mm.
Total weight	: Felt ca. 4 mm.
Width	: 400 & 500 cm +/- 1%
Light fastness	: ISO 105 B02: 5 to 8
Water resistance	: EN 1307, annex F: 5
Combustibility	: BS4790



Lima

